

# *THE SPIRIT*

## *March 2022*



### JOIN IN A HOLY LENT AT AMAZING GRACE

**Sundays**, March 6-April 10, at **10am**, we gather at 10am in person and on facebook live to experience God's love and we are filled **FULL TO THE BRIM** so that we can follow Jesus in loving God and our neighbor.

**Wednesdays**, March 9-April 6, we gather at **6pm** in the fellowship hall to learn together from the ELCA study, **Hungering for Justice**. Look for the study as an attachment to Grace Notes, or pick up a printed copy in the sanctuary after church or download it at: <https://www.elca.org/Resources/ELCA-World-Hunger#HungerEd>

**Wednesdays** March 9-April 6 we gather at **7pm** in the sanctuary for song, prayer, readings and silence guided by the theme: **Turning toward God's Abundance**.

**Lent 2022 begins just 2 weeks short of 2 YEARS** after the date of our first online worship in 2020. I wrote it on the calendar at the time, it seemed so momentous: the first Sunday that the only people in person in the sanctuary were Kris, playing piano, Steve filming and me leading worship. We quickly realized we couldn't go on without some help singing so we added a liturgist to the group and soon after that a worship assistant. It's been an evolving process in response to a threat none of us had ever before encountered.



We could not have imagined all that would happen in those 2 years. The world is a different place now. The **church** is a different place now. We've been battered and bruised. Many have died. Many have lost hope and even faith. Where do we go from here?

Our theme for Lent this year is, "**Full to the Brim: an expansive Lent.**" The gospel readings for this season are full of stories of God's love poured out freely and abundantly for us. We've done nothing to deserve or earn this grace and yet, like water, it spills over. This year, we're invited into a radically different Lent for a new time. **We're invited into a full life.** It's an invitation to be authentically who we are, to counter scarcity and injustice where it's found, to pour out even more grace where it is needed. It disrupts the scarcity mentality that competition, oppression and hierarchy plant within us. **When we allow ourselves to be filled to the brim with God's overflowing love, that love can't help but spill over beyond ourselves**, like water rushing and flowing touching everything in its path.

Living from fullness does not ignore or deny sin and suffering. But, if love is our beginning, we are empowered to live fully so that whether we're pursuing justice and hope, or living with grief and gratitude, we are loving, trusting that we belong to God. When we live fully in love, our lives overflow to fill others, which in

turn fills us again. **What could that look like here and now?**

**First, we pray.** We pray that God would intervene in our world. God has always acted to bring peace and hope where it is needed. God is acting and will continue to act but God works with and through us!

So, **secondly, we learn about the problems.** The resources in this newsletter can get you started learning about hunger in our world today. The Lent study, entitled **Hungering for Justice** will help give a broader perspective on how hunger is an issue of justice and what our faith has to say about it.

**Third we act.** We figure out what we can do and how God is calling us to be the hands and hearts of hope in this world right now and we do **something**, even if we start small.

At this time of global need, the ELCA 2022 **Hunger Challenge** invites us to **participate in feeding the world!** Please read the information below. (Do your own research and you'll find that due to the tumultuous times in which we live, the situation is evolving and that there are many ways to measure hunger and need, all of them indicating dire need to a greater or lesser degree.) **You might find this calculator helpful in determining how much you spend on food and even get some tips on spending less.**

<https://spendsmart.extension.iastate.edu/plan/what-you-spend/>

Then join with Christians around the world in the **Lenten disciplines of prayer, self-examination and repentance, prayer and fasting, sacrificial giving and works of love.** After prayer and reflecting on your own life and ability to offer financial gifts, we can commit to contributing to the Hunger Challenge. A tried-and-true way to do this is to contribute the cost of a meal each day of Lent.

So, for example if you and your family are very careful and currently spend on the low end of the average range, maybe \$3.00 a meal, you could contribute **\$3 a day** to the Hunger Challenge. If you're less careful, you may spend closer to the \$6. a meal and so you could contribute that. Over the 40 days of Lent that would mean a contribution of from \$120 to \$240. If we have **20 Amazing Grace families** participating in this challenge, we will be able to contribute somewhere between \$2400 and \$4800 to feeding the hungry people of this world just from our efforts. That will be multiplied by the contributions of many people around the world.

**That's how God's economy works! We respond to God's love for us by sharing part of what we're received and it's multiplied by the generosity inherent in our world! That makes a difference!**

Please check out the **40 Days of Giving Calendar** attached to the email from the office for ways you can participate every day of Lent in growing closer to God by living in the God's overflowing love.

**When love overflows in our lives, we follow Jesus in loving our neighbor. You are invited to share that love as God leads you to do that.** If you choose to participate in the Hunger Challenge you can give directly to ELCA World Hunger or you can make contributions to Amazing Grace that are clearly marked, "ELCA Hunger Challenge." **All contributions made to Amazing Grace will be added to our total so that we can see the difference we have made together in these 40 days.**

Ways to give: On the Amazing Grace website, click on Give. You'll see the option to give to the ELCA World Hunger Challenge.

Or directly to ELCA World Hunger: <https://elca.org/hunger/>

Or by mail: Make checks payable to "ELCA World Hunger" and mail to: Evangelical Lutheran Church in America P.O. Box 1809 Merrifield, VA 22116-8009

Or by phone: 800-638-3522 Monday-Friday, 8:00am-5:00pm central time

**We give thanks for the overflowing love of God and respond by loving our neighbors!**

Pastor Val



## 2022 ELCA Hunger Challenge: Reach God's children in dire need

### Starving children can't wait.

Elizabeth knows what it means to be pushed to the very brink. For seven long months, she and her children clung to life. **Their bodies ached with hunger.**

"Life was terrible and we went hungry," Elizabeth said. "**When they feel hungry, they just lay down,**" she said of her five young children. Their little bodies were wasting away.

Elizabeth lives in South Sudan where violence and civil unrest has been relentless. When the violence in her home village escalated and Elizabeth's husband was brutally killed; she knew she had to do something. Immediately.

She quickly gathered her children and fled — running for the woods. They left with only the clothes on their backs. No food or water. No blankets to keep them warm. Elizabeth's story is all too common.

Countless families like hers in forsaken parts of the world face crisis. The situation is dire. **That's why our 2022 Hunger Challenge to Save Lives is so important right now.**

### How hunger kills children

Every 10 seconds, hunger claims another child's life. Before it's really even had a chance to start.

Little by little, their organs begin to shut down. They can't even cry. Because that takes more energy than their little bodies have. Slowly and painfully, they waste away. And it's all preventable. Every single death.

### How your love saves

Your gift today to our 2022 Hunger Challenge will save children's lives.

Your love will provide a lifesaving, nutrient-rich supplement, similar to peanut butter, that treats severe malnutrition in young children. Your gift can bring an innocent child back from the brink of starvation.

### How friends of faith like you can turn hunger into hope

Just when Elizabeth thought they couldn't go on anymore, she was directed to a camp for displaced families like hers. And despite her new neighbors having so very little, what food they had — they shared. Just as Jesus would. "It was a blessing," Elizabeth said.

**The 2022 Hunger Challenge to Save Lives** is underway. You can feed a hungry child. You can save a life. Please give today to help God's most vulnerable children. Thank you for giving so generously and for sharing what you have with others. God bless you.



## WORLD HUNGER SITUATION

World food prices jumped 28% in 2021 to their highest level in a decade and hopes for a return to more stable market conditions this year are slim, the U.N.'s food agency said on Thursday. That jump is more or less depending on where you live along with many other factors.

In 2019, the average cost of an American meal cooked at home was \$3.02 per person, much higher in some places. If we multiply that base cost by the 28% increase in 2021 (which has jumped even more since then) we get, conservatively a cost of \$3.87 per person per meal in 2022.

### Marching towards starvation

As **811 million people go to bed hungry** every night, the number of those facing acute food insecurity has more than doubled - from 135 million to 276 million - since 2019. A total of **44 million people in 38 countries are teetering on the edge of famine**.

This **seismic hunger crisis** has been caused by a deadly combination of four factors.

- **Conflict** is still the biggest driver of hunger, with 60 percent of the world's hungry living in areas afflicted by war and violence. Events unfolding in **Ukraine** are further proof of how conflict feeds hunger, forcing people out of their homes and wiping out their sources of income.
- **Climate shocks** destroy lives, crops and livelihoods, undermine people's ability to feed themselves, and have displaced 30 million from their homes globally in 2020.
- The economic consequences of the **COVID-19** pandemic are driving hunger to unprecedented levels.
- And, last but not least, the **costs** of reaching people in need is rising: the price WFP is paying for food up 30 percent compared to 2019 and the cost of delivering that food has risen by an additional US\$42 million a month, compared to that same year.

<sup>1</sup> Information from WFP World Food Programme a part of the U.N.



## WE ARE ENTRUSTED WITH THE MINISTRY OF PRAYER

### God's people join in prayer for:

Cheri Lindgren, Chris Seelke, Doris and Phil Ostwald, Cher, Linda, Hank Bilderback, Melissa Murray, Loyd Gill, Paul Hanson and family, Jennifer, Leslie Prasch, Jordan, Tom, Tanya Anderson-Bowers, Monica Wilson, Tiffany Powell, Joseph, Courtney, Adrienne, Carl and June Bender, Ginny

Clark, Philip, Matthew Green and his family and we pray for family and friends mourning the death of Leif Tangvald. May he rest in peace and rise in glory. And we pray for family and friends mourning the death of Chris Bates. May he rest in peace and rise in glory.



### **BIRTHDAYS:**

Jared Erwin, March 1  
 Trace Erwin, March 1  
 Lana Lile, March 6  
 Hayley Sykes, March 7  
 Eileen Audett, March 9  
 William Rabung, March 9  
 Thomas Evanson, March 10  
 Steven Kincaid, March 10  
 Laura Carle, March 15  
 Mary Ann Majar, March 20  
 Jesse Channel, March 21  
 John Kincaid, March 22  
 Craig Teveliet, March 22

## **March BIRTHDAYS and ANNIVERSARIES**

Tim Leithold, March 24  
 Josie Weiberg, March 24  
 Moonbeam Kupka, March 26  
 Jordan Weiberg, March 27  
 Michael Pellessier, March 28

### **ANNIVERSARIES:**

Dennis & Donna Morrisette,  
 March 11  
 Trish Safstrom & Mark Smalley,  
 March 15  
 Gregory & Cynthia Johnstone,  
 March 20



**Task Force** for keeping everyone up-to-date on Covid conditions concerning Sunday worship or any other safety issues that may come up.

**Joelle, Amy, Joni** for delivering food to the Food Bank.

**Maintenance crew members** who set up the tables for the quilters.

**Roger Shaw** for continuing to work on the church building.

**Lynette Lile & Michelle Weiberg** for assembling and mailing/delivering the Valentine packages.

**Pastor Linda Smith** who led Sunday Services while pastor Val was on vacation.

**Diane Hanson** for leading Storytime two Sundays.

**Kristine Finazzo** for hand delivering some of last month's newsletters.

**Joelle Buckman** for coordinating Sunday morning worship in pastor's absence.

## VALENTINE CARE PACKAGES

Thank you all for your donations to share our love with our college age youth! We packed and sent off 8 Valentine Care packages. Lynette



## THANKS WE'VE RECEIVED

- **Amazing Grace:**

.I want to thank the endowment committee for the continued support I've received. I'm a first generation college scholar. You've watched me grow physically, mentally, and spiritually. It's an honor to represent Amazing Grace as I continue to work hard and honor Christ.

GO COUGS!

....But I plan on going to UW (gasp!) or EWU for my Master's in Public Health. I'm studying for the MCAT now. I'll come home to Aberdeen some day as Dr. Kaufman with God guiding my hands!

Much Love, Amanda K

## SERVING AT AMAZING GRACE

### ST. PATRICK'S PICK-UP DINNER

The annual St. Patrick's dinner is on **Saturday, March 19**. Pick-up time is 5pm. The menu will be corned beef and all the trimmings. If you would like an alternate, chicken can be requested.

Due to the increase cost of meat and other food items, the cost will be \$25.00.

**If you haven't paid, please pay online, or turn payment into the church office as soon as you can.**

Carmon will be giving you a call for your reservation. Please send or drop off payment at the office. We look forward to seeing you in the alley!  
Your 4-F team



### CHAPLAINS DINNER

**Our next meal prep day for Chaplains Dinner is Sunday, March 20th.**

Would you like to cook, donate food or money to feed hungry people in Aberdeen?

If you are interested in helping prepare or buy food, get in touch with Amy O. at [aaostwald@gmail.com](mailto:aaostwald@gmail.com) 360-482-2306 or simply send a donation to the church office marked for Chaplains Dinner.

We'll need the following:

- casserole - 3 cooks (making 2 pans each)
- 120 rolls
- vegetables to serve 120
- dessert — cookies or brownies, etc. for 120 (store-bought or homemade)

Chaplains Dinner is a mission of 'Chaplains on the Harbor' and feeds anyone that is hungry (housed or unhoused) each Sunday afternoon out of our church kitchen. Currently all meals are 'to-go.'

# Spring

## URGENT NEED FOR CONGREGATIONAL ACCOMPANI- MENT OF AFGHAN REFUGEES

In this season of Epiphany, as we remember our refugee Savior who was forced to flee his birthplace as a tender baby, ELCA congregations are urged to help resettle these vulnerable people.

**Giving through Amazon Wish List:  
copy links and paste to browser page.**

Puget Sound: Amazon Wish List in addition to beds, mattresses, kitchen tables/chairs, couches.

[https://www.amazon.com/hz/wishlist/ls/YFFYWACFKJHO?](https://www.amazon.com/hz/wishlist/ls/YFFYWACFKJHO?ref=wl_share&fbclid=IwAR2ltERfON-2AWG8GIA6AbIcBhS6M0jLT-KeraI96rVXgBeLR04CtCD9iiUw)

[ref=wl\\_share&fbclid=IwAR2ltERfON-2AWG8GIA6AbIcBhS6M0jLT-KeraI96rVXgBeLR04CtCD9iiUw](https://www.amazon.com/hz/wishlist/ls/YFFYWACFKJHO?ref=wl_share&fbclid=IwAR2ltERfON-2AWG8GIA6AbIcBhS6M0jLT-KeraI96rVXgBeLR04CtCD9iiUw)



**Pastor Linda Smith graciously filled in while Pastor Val was away. Thank you Pastor Linda!**

*Picture submitted by Diane Hanson*



## FOOD BANK FEEDS HUNGRY FAMILIES!

The Grays Harbor Food Bank continues to feed people in need in our community. Please bring your donations of food to the fellowship hall. They will be

delivered to the food bank weekly. The Food bank always needs **baby wipes, peanut butter, mac & cheese and diapers sizes 4,5, & 6**. If you prefer to help with a financial contribution, it may be sent to: Grays Harbor Food Bank P.O. Box 444 Aberdeen, WA 98520



# Southwestern Washington Synod

## Evangelical Lutheran Church in America

God's work. Our hands.

The Rev. Richard E. Jaech, Bishop



Dear Pastor Val and Members of Amazing Grace Lutheran Church,

Thank you for your continuing strong support for the ministry of the Southwestern Washington Synod and your partnership with us in these challenging times. I have seen you carry out your own ministry with so much creativity and courage as you care for one another and reach out in ministry to your neighbors!

In addition to financially supporting your congregation's ministry, you are sending a percentage of your offerings to the Southwestern Washington Synod as Mission Support, so that we can join together to carry out important ministries. With joy I can report to you that Mission Support from our 88 Synod congregations during the past fiscal year was \$27,000 more than we had budgeted. This has enabled us to fully carry out our Synod mission plan, which includes:

- Supporting eight New Mission starts throughout the Synod
- Assisting 19 congregations through the transition process of calling a new pastor
- Providing \$3,000 scholarships to 3 seminarians from our Synod and \$2,500 in student debt relief to 12 new pastors
- Continuing our PSALM lay ministry training program
- Forming work teams to provide affordable housing and work against racism

The Synod passes on 40% of your Mission Support to our national ELCA ministry, which carries out such vital ministries as:

- Supporting the work of 150 missionaries around the world
- Training new pastors and deacons in seven ELCA seminaries
- Providing food and agricultural training to hungry people. Major financial support went to four hunger programs sponsored by Synod congregations (Hope, Enumclaw; St. John, Chehalis; Light of Grace, Federal Way; and Peace, Tacoma)

Enclosed you will find the statement for your congregation's Mission Support from February 1, 2021, to January 31, 2022, which is our fiscal year. Please contact us if you have any questions or corrections to make.

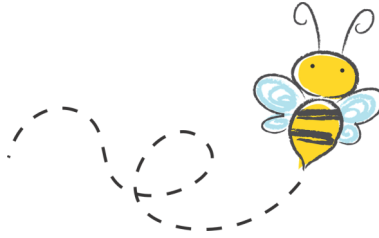
Thank you for your support, prayers and daily ministry. It is a privilege and honor to be walking this path with you!

In Christ,

Bishop Rick Jaech

### Giving Statement Totals

4 LWR-A5	\$251.72	325 Living Stones Prison Min	\$774.03
300 SWWA Mission Support	\$11,054.84	328 ELCIN (Namibia)	\$774.05
		705 PLU	\$774.04



## OFFICE HOURS

Church office is open: **Tuesday & Thursday 8-2, Wednesday 8-1 & Friday 8-11.** AGLC Office  
360.532.8250 [amazing111@comcast.net](mailto:amazing111@comcast.net)

**As I begin to hold office hours again, they may be sporadic until I figure out the best times to be at church.** Please call, text, or email if you'd like to arrange a time to meet! Pastor Val: 360-580-8977  
[vmetropoulos001@luthersem.edu](mailto:vmetropoulos001@luthersem.edu).



## PRO TIPS FOR HEALTHY COMMUNICATION AT AMAZING GRACE

Healthy communication is important in the best of times. Throw in a pandemic and political turmoil and things can get messy. **In the church we are especially careful to express our love for each other** and for all our neighbors by practicing healthy communication skills. Some basics that are helpful in all relationships include the following.

- **Everyone speaks for themselves. Each of us needs to take responsibility for expressing our own feelings or concerns.**
- **When there is a concern, we go directly to the person involved. Honest, direct, loving communication is the basis of all healthy relationships.**
- **If the concern is not resolved after direct communication, we ask a neutral person to join us in that conversation for the sake of understanding and healing.**
- **We avoid triangulation. Triangulation occurs when one person does not communicate directly with another person, instead using a third person to relay communication to the second. Triangulation distorts relationships and makes clear communication difficult.**
- **We pray for each other trusting that God loves us all and in prayer can heal our hurts and restore relationships.**



**Amazing Grace Lutheran Church  
Council Meeting Minutes  
January 11, 2022**

**Vision:** A welcoming place where grace happens.

**Mission:** To Experience and share God's love through worship, education, and community.

**Values:** Radical Hospitality; Passionate worship; Intentional faith development; Risk-taking mission and service; Extravagant Generosity.

**As Church Council, we 1. Ensure that the mission of the church is fulfilled (Love God and Love Neighbor) and 2. Manage the property and finances of the congregation so that purpose #1 can be fulfilled.**

President: Joelle Buckman; VP: 1st Qtr.: Dee

Attendance: Joelle Buckman, Pastor Val, Mike Barkstrom, Phil Stegemoeller, Amy Ostwald, Theresa Kaufman, Carrie Erwin, Curtis Steinhauer

- I. Devotions** (15 min)
- II. Call to Order** by Pres. Joelle Buckman 6:21
- III. Establish Quorum**
- IV. Review and Approve Agenda**
- V. Approve minutes from meetings:** Dec. 14 (II-V: 5 min)
- VI. Business items** (these are generally items that are beyond any one ministry or don't fit under any ministry, special requests from the community) (20min)
  - A. Mutual Ministry – Will meet next week.
  - B. Gift Policy
    - Committee has been working for months with the ELCA foundation representative. Further discussion and voting will be by email by council members.
  - C. Endowment Fund Committee
    - Will be discussed next month.
  - D. Annual Meeting--Task Force discussed having a hybrid annual meeting or having the annual meeting on zoom only. They continue to meet weekly.
    - a. Recognize out-going council members
      - Thank you to Amy and Mike, for their 6 years of service.
    - b. New Council members
      - Nominating committee present Joe Fernandez for the Maintenance position and Suzan Stegemoeller for the Outreach position. New council installation will be the Sunday after the Annual Meeting.
    - c. Presentation to congregation
      - Will discuss roles by email
- VII. Ministry team reports:** (30 min)
  - A. Worship – Dee Erickson and Pastor Val
    - i. Task Force report – Online only worship until Covid numbers are better
    - ii. Audio/video – update - Pastor Val - No changes.
    - iii. Advent & Christmas; Epiphany – 8 weeks
      - Went well. Starting to see more people online.

**B. Outreach – Amy Ostwald**

- i. Family Promise - No update
- ii. Chaplain's dinner - Coming up this weekend
- iii. Synod Affordable Housing Initiative – Pastor Val/Curtis - No update
- iv. Christmas Outreach - The ELF project Served 49 families and 6 youths.

**C. Youth & Family – Curtis Steinhauer**

i. Sunday School

-No more outdoor Sunday school for now. February will do Sunday school on zoom once a month and coordinate quarterly events.

ii. Adult group study- JustFaith Groups

-finished in December. Study group was led by Hank and Diane. New class will begin in early February.

**D. Fellowship – Carrie Erwin**

i. Stephen Ministry Training

-On-line classes are available, no cost is available yet.

**E. Property – Mike Barkstrom**

Stained glass windows proposal-

-Council discussed tithing from funds raised and how that tithe would be used.

-Council discussed whether to vote on the stained-glass window at the annual meeting. If the first option to do most of the windows does not get 2/3 majority, the second option will be presented. If that vote fails, the third is the chosen option – to do nothing. The three options are: 1. Doing the entire thing at once. 2. Doing most critical windows first and others at different stages. 3. Doing nothing.

-Council voted on presenting those three options to the congregation using funds from the church's Endowment fund, provided options 1 and 2 include language about the specific project dollar amount and money to be tithed. It was **M/S/P**

That proposal includes:

1. Contractor and price
2. Plan to pay for the project
3. Plan to direct a 10% tithe check from the Endowment Fund to Amazing Grace to be placed in a mission account.

**VIII. Financial Reports: (30 min)**

**A. Treasurer's Report – Theresa Kaufman**

-There were discrepancies in Theresa's and Phil's reports, which will be corrected.

i. Approve December Bills Paid **M/S/P**

**B. Financial Secretary's Report – Phil Stegemoeller**

i. Proposed Budget 2022

-Discussed a 15% raise in salary for secretary, pianist, custodian and treasurer.

-Motion to present Budget to congregation at the Annual Meeting. **M/S/P**

ii. New Program for financial secretary – Joelle

-Working on it. Council approved extra hours for Vicky to work on this project, moving information into new program.

**IX. Pastor's Report**

(IX – XI 10 min)

**X. Task Assignments**

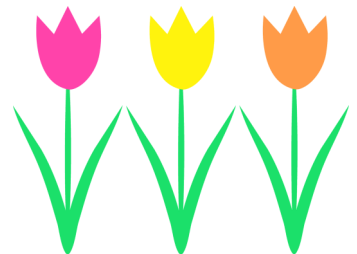
-Pastor Val and Carrie will get together and discuss Stephen Ministry Training

-Theresa needs to get in Budget report by Thursday

-Council will discuss Gift Policy by email.

-Council will discuss roles for the annual meeting to the congregation one week before the annual meeting.

**XI. Adjournment and closing prayer 8:34**



## **PASTOR'S REPORT January 2022**

### **WORSHIP/DISCIPLESHIP**

Sunday worship – Plan and lead  
Plan adult education  
Plan seasonal and special worship services  
Sermons – prayer, study, reading, writing  
Prayer  
Meet with ministry leader as needed  
Liturgical Arts team

### **ADMINISTRATION**

Reports: congregational; synod; ELCA  
Conference deans – meet bi-annually & as needed

Recordkeeping: updates to documents; church ledger  
Work with office administrator: bulletins, newsletter, etc.  
Council meeting & Exec. Comm. meeting monthly  
Newsletter - writing, editing  
Meet with treasurer as needed  
Mutual Ministry meeting monthly  
Endowment Committee advisor

### **FELLOWSHIP/PASTORAL CARE/COUNSELING** PSALM – mentor; spiritual direction

Prayer Chain – coordinate w/ Brenda Grant  
Grace notes weekly or as needed  
Pastoral care as needed  
Coordinate with ministry leader as needed

### **OUTREACH**

Affordable housing Synod meeting  
Facebook page – outreach through social media.  
Coordinate with others to support homeless and marginalized people  
Meet w/ ministry leader as needed

### **BUILDING AND MAINTENANCE** Meet w/ ministry leader as needed

### **YOUTH AND FAMILY**

Adult study: plan and participate  
Confirmation: plan and lead  
Sunday School: coordinate with ministry leader

### **STEWARDSHIP/EVANGELISM** Study and integrate into sermons

### **PROFESSIONAL GROWTH:** Bible Study w/ Perkins Foundation on Zoom

### **OTHER ACTIVITIES in January**

#### **OFFICIAL ACTS:**

None

#### **ADMINISTRATIVE:**

Annual Report  
Stained Glass project  
Hybrid Annual Meeting logistics planning  
Task Force for resuming in person worship

#### **PASTORAL CARE:**

Visits to dying and grieving  
Visits, calls, texts, messaging as needed

#### **WORSHIP:**

Planning for Lent

#### **YOUTH/FAMILY/EDUCATION:** Story Time in Worship – the story for all ages, targeting children who cannot be vaccinated and so are not in person in worship Sunday School – consult; find curriculum

#### **VACATION:**

Feb. 9-21

#### **UPCOMING:**

Lent begins with Ash Wednesday – March 2  
Easter – April 17



## MARCH WORSHIP ASSISTANT SCHEDULE

### March 6

<b>Liturgist:</b>	Hank Bilderback
<b>Worship Assistant/Reader:</b>	Joelle Buckman
<b>Communion Assistants:</b>	Carmon Shaw & Steve Swanson
<b>Ushers/Greeters:</b>	Jim & Michelle Weiberg
<b>Depositors:</b>	Greg Johnstone & Hiedi Seelke
<b>Communion set-up</b>	Dee Erickson
<b>Stream Team:</b>	Curtis

### March 13

<b>Liturgist:</b>	Keith
<b>Worship Assistant/Reader:</b>	Suzan Stegemoeller
<b>Communion Assistant:</b>	Diane Hanson & Darci Jewitt
<b>Ushers/Greeters:</b>	Dee Erickson & Naomi Kraiger
<b>Depositors:</b>	Carmon Shaw & Joelle Buckman
<b>Communion set-up:</b>	Laura Carle
<b>Stream Team:</b>	Amy

### March 20

<b>Liturgist:</b>	Greg Johnstone
<b>Worship Assistant/Reader:</b>	Steve Swanson
<b>Communion Assistant:</b>	Arlene Torgerson & Mark Smalley
<b>Ushers/Greeters:</b>	Molly & Tim Leithold
<b>Depositors:</b>	Karen Barkstrom & Hiedi Seelke
<b>Communion set-up:</b>	Carmon Shaw
<b>Stream Team:</b>	Keith

### March 27

<b>Liturgist:</b>	Curtis Steinhauer
<b>Worship Assistant/Reader:</b>	Carmon Shaw
<b>Communion Assistant:</b>	William Rabung & Joelle Buckman
<b>Ushers/Greeters:</b>	Amy Ostwald & Theresa Kaufman
<b>Depositors:</b>	Mark Ostwald & Mike Barkstrom
<b>Communion set-up:</b>	Tara Main
<b>Stream Team:</b>	Joe





President	Joelle Buckman	(360) 589-6111	Joelle_buckman@email.com
Treasurer	Theresa Kaufman	(360) 537-1190	Theresamarie4739.3@gmail.com
Financial Secretary	Phil Stegemoeller	(360) 580-9310	phil@willisent.com
Youth & Family	Curtis Steinhauer	(360) 580-2301	turtis21@gmail.com
Outreach	Suzan Stegemoeller	(360) 249-6986	suzansteg@hotmail.com
Worship	Dee Erickson	(360) 533-7948	deekaye1@comcast.net
Fellowship	Carrie Erwin	360-500-3767	mcerwin@comcast.net
Property	Joe Fernandez	(206) 372-7901	Joseph.m.fernandez@gmail.com
Pastor	Val Metropoulos	(360) 580-8977	vmetropoulos001@luthersem.edu
Church Secretary	Vicky Kolb	(360) 532-8250	amazing111@comcast.net



## EVENTS AT AMAZING GRACE in MARCH

**Sunday Worship at 10am**

**Ash Wednesday March 2, noon**

**Lent Study-Hungering for Justice 6pm in the Fellowship Hall**

**Lent mid-week worship-Turning Toward God's Abundance 7pm in the Sanctuary.**

**4F Pick-up Dinner March 19, 5pm**

**Larry Osborne Funeral on March 6, 3pm**

**Leif Tangvald funeral at Saron March 19, 10am**

**Wednesday Quilters: March 2nd, 16th & 30th from 9am-12pm**

**Scrapbooking: March 4th & 18th from 6pm-10pm**

**Handsewers: March 8th & 22nd from 9am-3pm**

**Daylight Saving Time Begins- March 13**

## UPCOMING EVENTS

**Palm Sunday— April 10**

**Maundy Thursday— April 14**

**Good Friday— April 15**

**Easter Sunday— April 17**

## BUILDING REPAIRS/MAINTANCE

Please notify Joe Fernandez or send a message to the church office if there are any repairs needed at the church. Sometimes members or visitors notice things that need to be fixed that the committee is not aware of. Your input is helpful in these matters.

Joe Fernandez: [Joseph.m.fernandez@gmail.com](mailto:Joseph.m.fernandez@gmail.com)- (206) 372-7901

### Ministers: The People of Amazing Grace

111 E. 4th Street, (360) 532-8250

[amazinggraceaberdeen.org](http://amazinggraceaberdeen.org)

[amazing111@comcast.net](mailto:amazing111@comcast.net)

**Pastor:** Val Metropoulos (360) 580-8977

[vmetropoulos001@luthersem.edu](mailto:vmetropoulos001@luthersem.edu)

**Office Administrator:** Vicky Kolb

**Liturgists:** Hank Bilderback, Keith Lile, Laura Carle,  
Curtis Steinhauer, Greg Johnstone

**Musicians:** Kristine Burns and Hiedi Seelke



## JANUARY BALANCES OF CHURCH ACCOUNTS

Checking			\$ 12,174.57
-PSALM			\$ 100.00
-Technology			\$ (64.55)
-Caring Cupboard			\$ 433.51
-Pastor's Sabbatical Reserve			\$ 2,620.00
-Music			\$ (393.54)
-Bells			\$ 965.95
-Friends in Need			\$ 1,035.49
-Reformation Fund			\$ 1,071.20
-Outreach Funds			\$ 500.00
-Altar Restore			\$ 386.83
-Altar Guild			\$ 367.00
-Noisy Offering			\$ -
-Family Promise Maintenance Holding			\$ 2,642.68
-Chaplain's Dinner			\$ 215.54
-Grace Fund			\$ 340.00
		<b>TOTAL</b>	\$ 22,394.68
			\$ -
*Maintenance Checking			\$ 13,748.63
-*Stained Glass Windows			\$ 30,806.56
Youth Checking			\$ 295.75
Memorial Savings			\$ 13,850.31
Mikkel Thompson Savings			\$ 1,927.53



**Please join us for worship**  
**Sundays at 10am in person or on our Facebook page:**  
**<https://www.facebook.com/Amazing-Grace-Lutheran-Church-114570725233786/>**

**Or anytime at: [amazinggraceaberdeen.org](http://amazinggraceaberdeen.org)**  
***AMAZING GRACE LUTHERAN CHURCH***  
***of Grays Harbor***



**Evangelical Lutheran Church in America**

God's work. Our hands.

**VISION**

A welcoming place where grace happens!

**MISSION**

To experience and share God's love through worship,  
education and community

**VALUES**

Radical Hospitality  
Passionate worship  
Intentional faith development  
Risk-taking mission and service  
Extravagant generosity



Amazing Grace Lutheran Church of  
Grays Harbor

111 E. 4th Street

Aberdeen, WA 98520

360.532.8250

[amazing111@comcast.net](mailto:amazing111@comcast.net)

[www.amazinggraceaberdeen.org](http://www.amazinggraceaberdeen.org)



PLEASE  
PLACE  
STAMP  
HERE